

# T-30

## TURNTABLE

# OWNER'S MANUAL



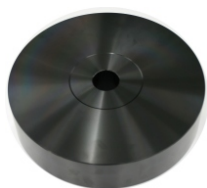
**HANSS**  
a c o u s t i c s

Dear Customer

Thank you for purchasing the HANSS ACOUSTICS T-30 turntable.  
Please read the following manual carefully and in detail before beginning the setup.

1	Aluminum Platter	7	Silcon Belts
2	Strobo Disc	8	Record Clamp
3	Bearing Housing	9	Synchronized Motor(2PCS)
4	Chassis	10	AC Power Cords
5	Level Meter	11	Gloves
6	Speed controller	12	Flat Screwdriver

1



2



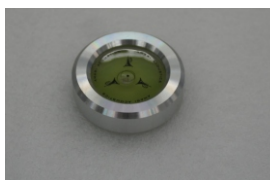
3



4



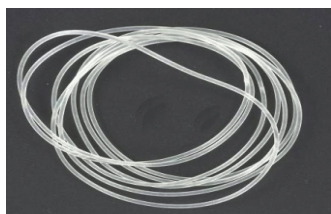
5



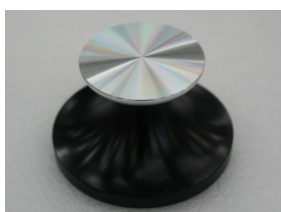
6



7



8



9



10



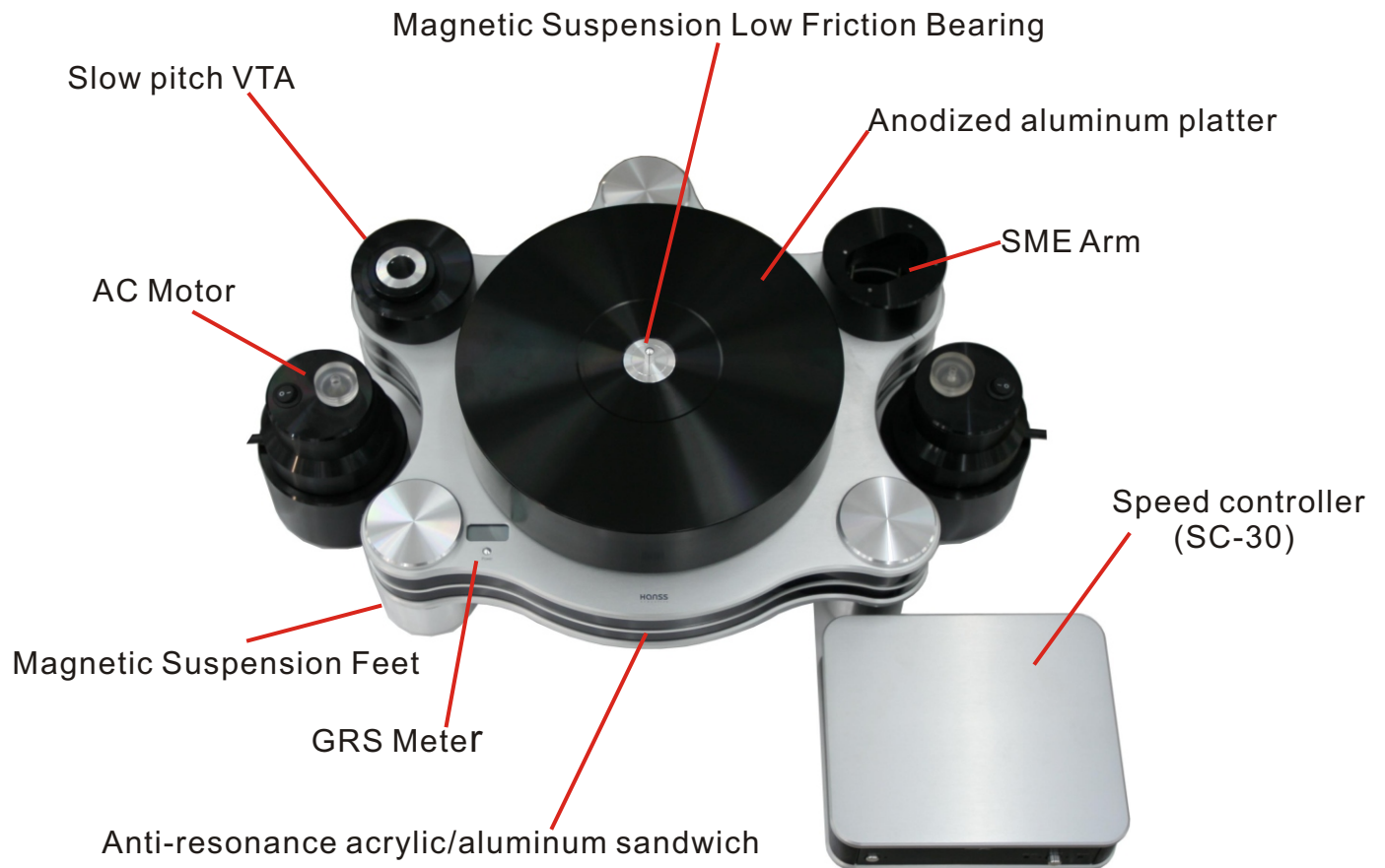
11



12



## KEY FEATURES



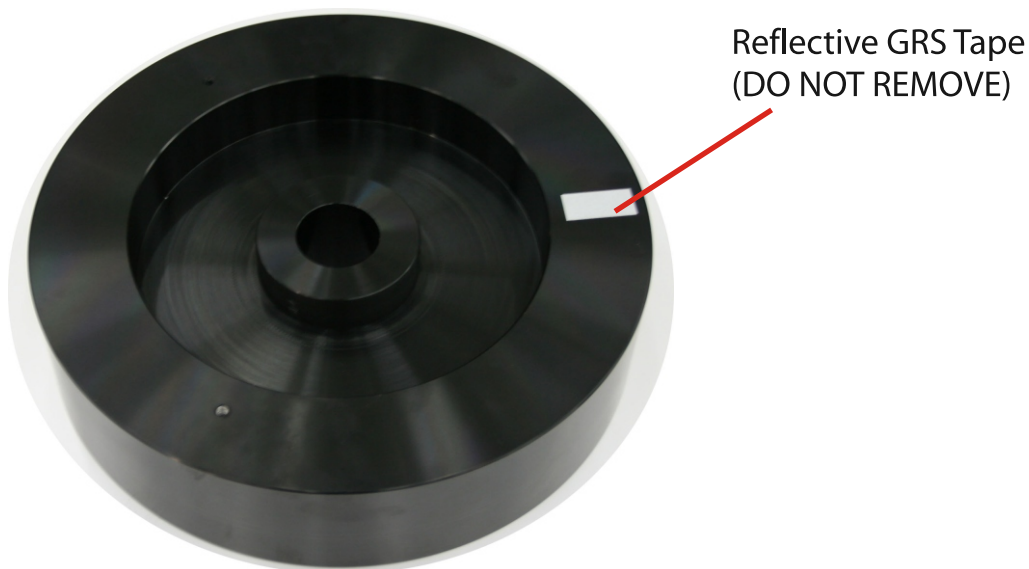
### SC-30



## IMPORTANT NOTICE

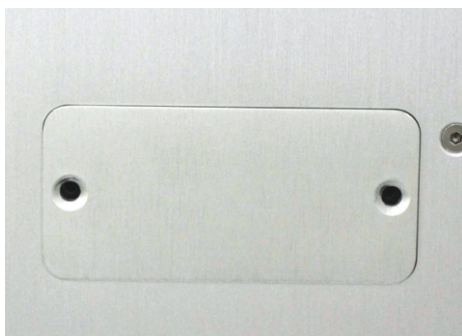
T-30 is equipped with GRS meters and to ensure accurate operation please do not do the followings

1. DO NOT remove the reflective tape on the bottom of the platter as the GRS meter will not operate.
2. DO NOT use the SC-30 for operations other than HANSS ACOUSTICS TURNTABLES.



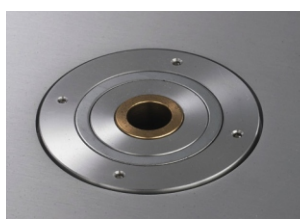
### Installing the Battery for GRS battery.

Take the chassis out from the protective packaging and locate the small compartment on the bottom left hand side of the Chassis. Unscrew and plug in the supplied 9V battery.



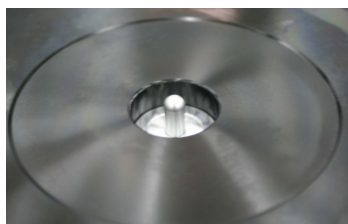
### Leveling the turntable to match your rack.

Place the turntable on a stable surface along with the supplied level meter and height adjustable feet for the initial leveling.



1

Please peel off the protective sheet



3

Please place and fit the platter to the bearing housing



2

Please insert the bearing housing

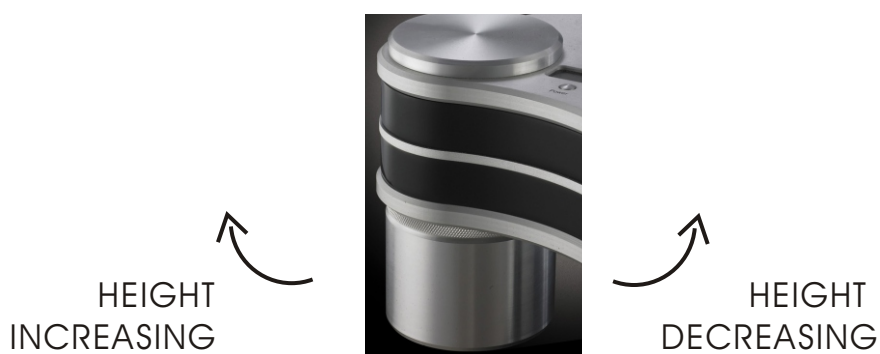
## SILCON BELT INSTALLION

We have provide 6 belts for the drive connection.first of all,please place the belt to the aluminum platter and ten attach the motor (YOU MAY USE ONE BELT FOR THE OPERATION)



## LEVELING THE TURNTABLE

It is very important to level the turntable before any adjustment. Therefore ,please locate the LP-210 on a stable surface which is suitable for your operation. Please make use of the leveling meter to adjust the horizontal level by means of the magnetic feet show as follow:



### Conneting the SC-30 speed controller

With the motor in place you can connect the SC-30 speed controller. Do not connect any power before the motor is connected to SC-30. Take the motor external power cable and connect to the provided slot at the rear of the SC-30. Now plug it into your AC wall outlet for operation.



### Speed adjustment using the GRS meter and SC-30

T-30 is equipped with a GRS meter and SC-30 speed controller. Both can be used in conjunction to calibrate the speed of motor to an accurate setting for both 33.3rpm and 45rpm playback. Press the power "ON" of the SC-30 and then select 33.3rpm or 45rpm for operation. Next switch "ON" the motor housing and the platter will begin to rotate. With the platter rotating press the button located directly below the GRS Meter screen. The GRS will activate and give a rotation reading after several seconds. Once the reading is displayed you can make slight adjustments to the speed using the SC-30. For example if the initial reading is 33.21rpm you can use the provided tool to adjust and the reading will change after one rotation of the platter. Once you have reached the desired 33.3rpm settings, the SC-30 will supply an accurate and stable speed. Once the speed is locked in place, we recommend the GRS Meter display to be turned "OFF" to ensure longer life of supplied battery. This can be done by depressing the power button several seconds until the screen goes off.





## SPECIFICATIONS

Type	: Rigid Turntable/Standalone Motor
Platter	: 67mm CNC Aluminum 10kg Hardcoated black anodized
Bearing	: Magnetic Suspension low friction bearing
Chassis	: CNC precision cut aluminum/acrylic sandwich
Color	: Natural Aluminum/Reflective black
Feet:	: Magnetic Suspension adjustable aluminum feet
Motor	: Synchronized AC Motor.(2pcs) Housing: Aluminum : AC Motor 230V~ 50/60 Hz
Speed:	: 33.3rpm/45rpm
Pulley:	: Acrylic
Belt:	: 6pc silicon rubber
Additional Features	: SC-30 Speed Controller
VTA:	: 20-25mm range
Dimension(L/W/H):	: 635*435*222mm
Total weight:	: 37.8KGS

## LIMITED WARRANTY

HANSS ACOUSTICS warrants the product designated herein to be free from manufacturing defects provided proper operation for a period of two years the original date of purchase. Each HANSS ACOUSTICS distributor is responsible to honour the warranty during this time. Any unauthorized servicing or modification of this equipment immediately voids the 2 year service warranty . For questions regarding service or operation please contact the dealer where the unit was purchased or email to [info@hanssacoustics.com](mailto:info@hanssacoustics.com) for further assistance.

HANSS ACOUSTICS CO., LTD

TEL : +852 2754 1777

FAX : +852 2754 6777

EMAIL: [info@hanssacoustics.com](mailto:info@hanssacoustics.com)

WEB : [Http://www.hanssacoustics.com](http://www.hanssacoustics.com)